

A—N—D

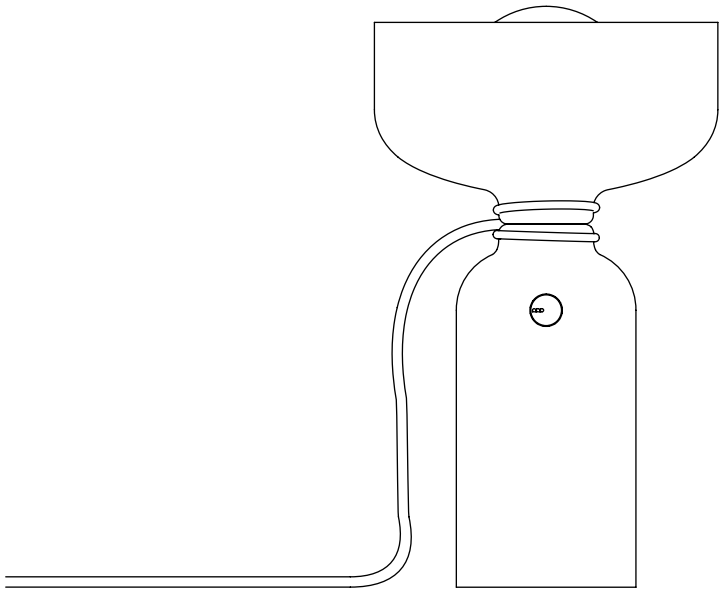
SPOTLIGHT VOLUMES SERIES TABLE

DESIGNER
LUKAS PEET

INSTRUCTIONS



SCAN HERE





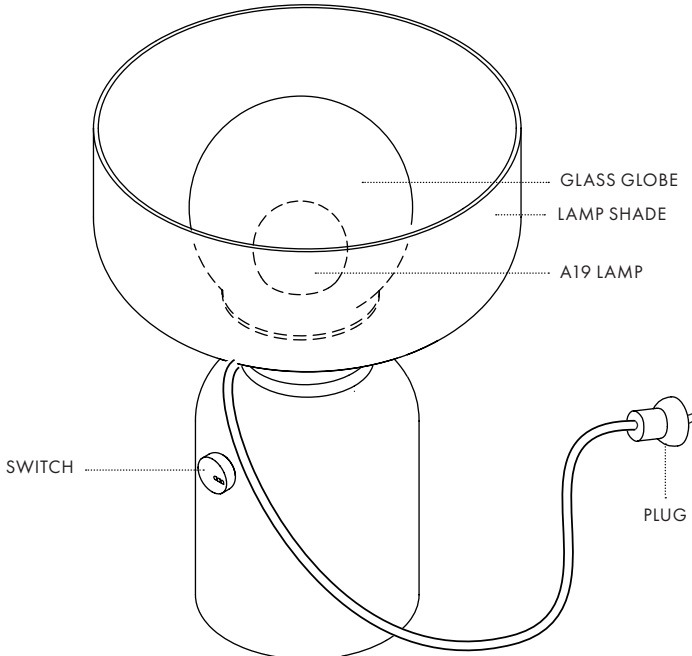
CARE INSTRUCTIONS

Always wear clean gloves when handling the luminaire.

Clean painted surfaces with a soft, lint-free cloth. Clean glass with a soft lint-free cloth and a standard glass cleaner.

For replacement glass globes, contact A-N-D directly.

Never exceed the recommended max wattage and voltage as doing so may damage the luminaire or cause a fire.

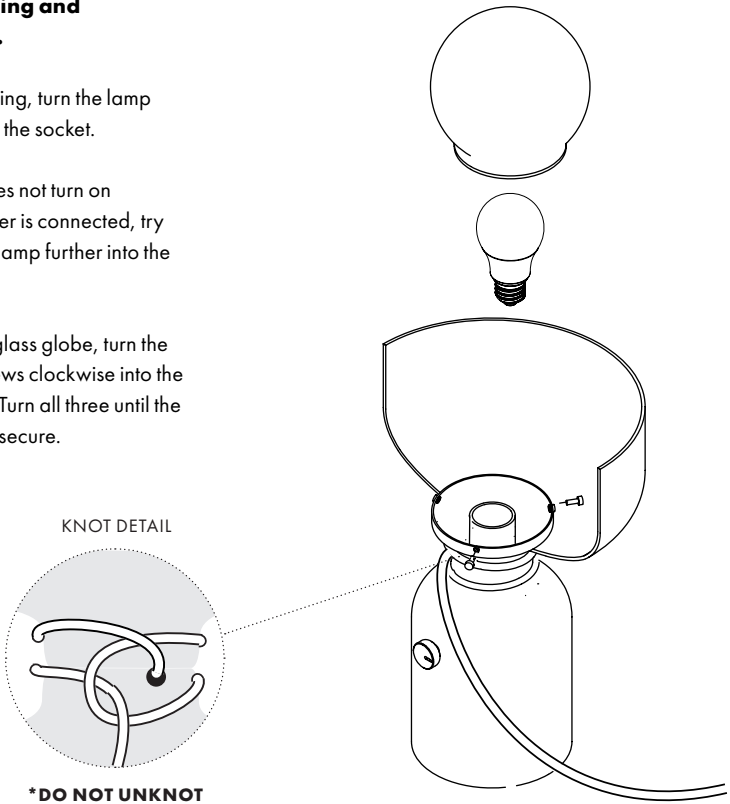


Install lamping and glass globe.

To install lamping, turn the lamp clockwise into the socket.

If the lamp does not turn on when the power is connected, try threading the lamp further into the lamp socket.

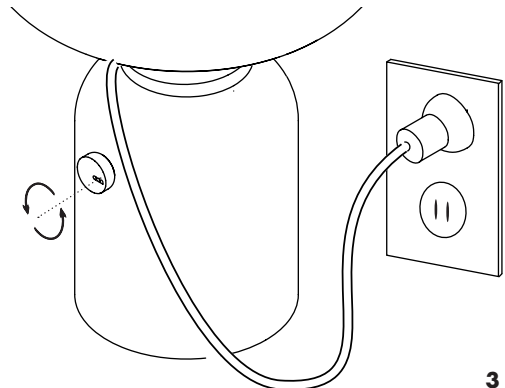
To attach the glass globe, turn the the thumb screws clockwise into the globe holder. Turn all three until the glass globe is secure.



ON / OFF + DIMMING

Plug the Spotlight into the wall receptacle.

Rotate the switch to turn the Spotlight on, off and to adjust the brightness.



A—N—D

For support, please contact:

info@a-n-d.com

+1 604 563 6938



1951 Franklin St,
Vancouver, BC
Canada V5L 0C7

A-N-D.COM