

Random Cloud,
Design by Chia-Ying Lee

Model Random Cloud 7 Lights Ø23

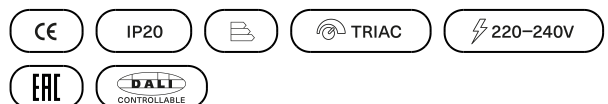
Random Cloud captures the essence of why a cloud continues to fascinate us: voluminous yet simultaneously light and ethereal.



Random Cloud 7 Lights Ø23	Light source	Canopy: Metal	Diffuser: Blown glass	Code 2700 K	Code 3000 K
	LED 2700 K 7 x 3 W 3150 lm 350 mA CRI 90 MacAdam 3-Step	<input type="radio"/> Matte White – 9010 <input type="radio"/> Matte White – 9010 <input type="radio"/> Matte White – 9010 <input type="radio"/> Matte White – 9010 <input type="radio"/> Matte White – 9010 <input type="radio"/> Matte White – 9010 <input type="radio"/> Matte White – 9010 <input type="radio"/> Matte White – 9010	<input type="radio"/> Clear <input type="radio"/> Frosted White <input type="radio"/> Chrome <input type="radio"/> Glossy Smoke <input type="radio"/> Glossy Bronze <input type="radio"/> Gold <input type="radio"/> Rose Gold	22121 0027 22121 1327 22121 4027 22121 4327 22121 4627 22121 5027 22121 5527	22121 0030 22121 1330 22121 4030 22121 4330 22121 4630 22121 5030 22121 5530
	LED 3000 K 7 x 3 W 3360 lm 350 mA CRI 90 MacAdam 3-Step	<input type="radio"/> or			

LED and driver included

Net weight: 5.20 kg Parcels: 15

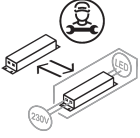


Energy efficiency class

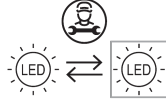
D

Ecodesign Regulation

The LED driver contained in this fixture must only be replaced by the manufacturer, its support service or similarly qualified personnel.



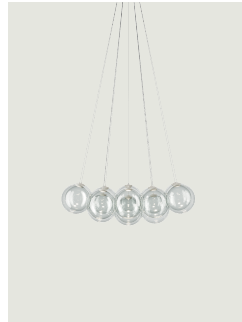
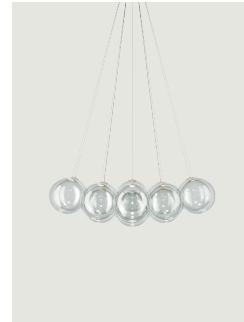
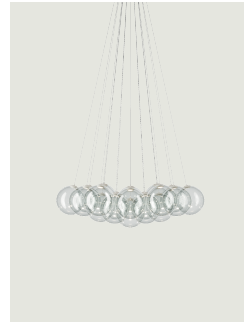
The LED-only light source contained in this fixture must only be replaced by the manufacturer, its support service or similarly qualified personnel.



Options of Random Cloud



Random Cloud 7 Lights Ø28

Random Cloud 14 Lights
Ø23Random Cloud 14 Lights
Ø28Random Cloud 19 Lights
Ø23