

Random Cloud,
Design by Chia-Ying Lee

Model Random Cloud 23 Lights Ø28

Random Cloud captures the essence of why a cloud continues to fascinate us: voluminous yet simultaneously light and ethereal.



| Random Cloud 23 Lights Ø28 | Light source | Canopy: Metal | Diffuser: Blown glass | Code 2700 K | Code 3000 K |
|----------------------------|--|--|-------------------------------------|-------------|-------------|
| | LED 2700 K 23 x 3 W 10350 lm 350 mA CRI 90 MacAdam 3- Step | <input type="radio"/> Matte White – 9010 | <input type="radio"/> Clear | 22128 0027 | 22128 0030 |
| | or LED 3000 K 23 x 3 W 11040 lm 350 mA CRI 90 MacAdam 3- Step | <input type="radio"/> Matte White – 9010 | <input type="radio"/> Frosted White | 22128 1327 | 22128 1330 |
| | | <input type="radio"/> Matte White – 9010 | <input type="radio"/> Chrome | 22128 4027 | 22128 4030 |
| | | <input type="radio"/> Matte White – 9010 | <input type="radio"/> Glossy Smoke | 22128 4327 | 22128 4330 |
| | | <input type="radio"/> Matte White – 9010 | <input type="radio"/> Glossy Bronze | 22128 4627 | 22128 4630 |
| | | <input type="radio"/> Matte White – 9010 | <input type="radio"/> Gold | 22128 5027 | 22128 5030 |
| | | <input type="radio"/> Matte White – 9010 | <input type="radio"/> Rose Gold | 22128 5527 | 22128 5530 |

LED and driver included

Net weight: 23.80 kg

Parcels: 47

Connectable directly to a 4" Standard J-Box



IP20



TRIAC

220-240V

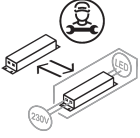


Energy efficiency class

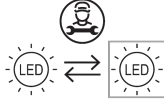
D

Ecodesign Regulation

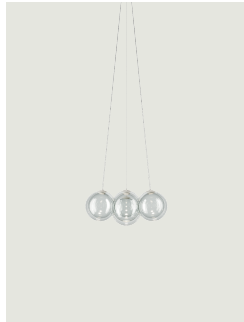
The LED driver contained in this fixture must only be replaced by the manufacturer, its support service or similarly qualified personnel.



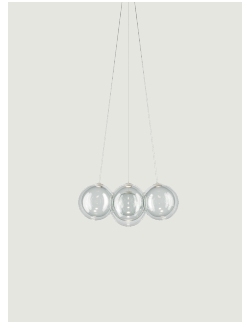
The LED-only light source contained in this fixture must only be replaced by the manufacturer, its support service or similarly qualified personnel.



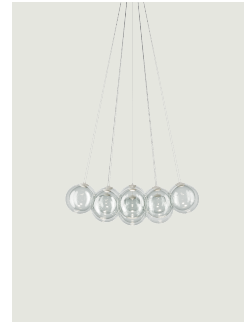
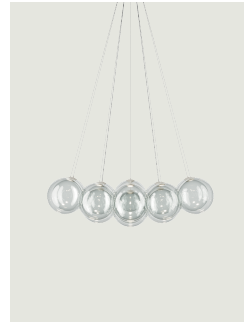
Options of Random Cloud



Random Cloud 7 Lights Ø23



Random Cloud 7 Lights Ø28

Random Cloud 14 Lights
Ø23Random Cloud 14 Lights
Ø28