

Random Cloud,  
Design by Chia-Ying Lee

Model Random Cloud 14 Lights Ø28

Random Cloud captures the essence of why a cloud continues to fascinate us: voluminous yet simultaneously light and ethereal.

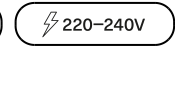


Random Cloud 14 Lights Ø28	Light source	Canopy: Metal	Diffuser: Blown glass	Code 2700 K	Code 3000 K
	LED 2700 K 14 x 3 W 6300 lm 350 mA CRI 90 MacAdam 3-Step	<input type="radio"/> Matte White – 9010	<input type="radio"/> Clear	22124 0027	22124 0030
	LED 3000 K 14 x 3 W 6720 lm 350 mA CRI 90 MacAdam 3-Step	<input type="radio"/> Matte White – 9010	<input type="radio"/> Frosted White	22124 1327	22124 1330
	LED 2700 K 14 x 3 W 6300 lm 350 mA CRI 90 MacAdam 3-Step	<input type="radio"/> Matte White – 9010	<input type="radio"/> Chrome	22124 4027	22124 4030
	LED 2700 K 14 x 3 W 6300 lm 350 mA CRI 90 MacAdam 3-Step	<input type="radio"/> Matte White – 9010	<input type="radio"/> Glossy Smoke	22124 4327	22124 4330
	LED 2700 K 14 x 3 W 6300 lm 350 mA CRI 90 MacAdam 3-Step	<input type="radio"/> Matte White – 9010	<input type="radio"/> Glossy Bronze	22124 4627	22124 4630
	LED 2700 K 14 x 3 W 6300 lm 350 mA CRI 90 MacAdam 3-Step	<input type="radio"/> Matte White – 9010	<input type="radio"/> Gold	22124 5027	22124 5030
	LED 2700 K 14 x 3 W 6300 lm 350 mA CRI 90 MacAdam 3-Step	<input type="radio"/> Matte White – 9010	<input type="radio"/> Rose Gold	22124 5527	22124 5530

LED and driver included

Net weight: 15.70 kg

Parcels: 29

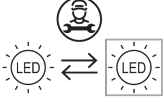


Energy efficiency class

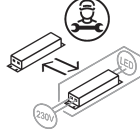
## D

## Ecodesign Regulation

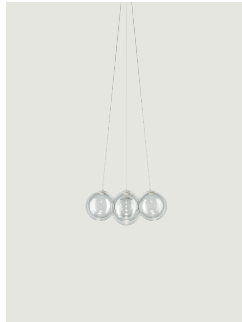
The LED-only light source contained in this fixture must only be replaced by the manufacturer, its support service or similarly qualified personnel.



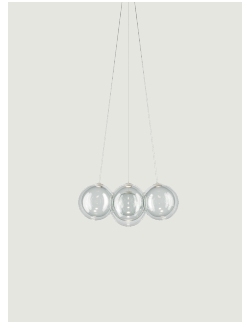
The LED driver contained in this fixture must only be replaced by the manufacturer, its support service or similarly qualified personnel.



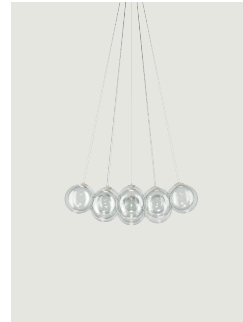
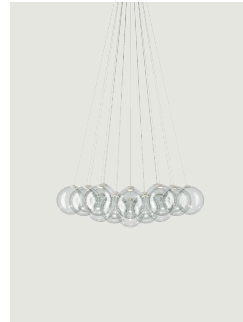
## Options of Random Cloud



Random Cloud 7 Lights Ø23



Random Cloud 7 Lights Ø28

Random Cloud 14 Lights  
Ø23Random Cloud 19 Lights  
Ø23