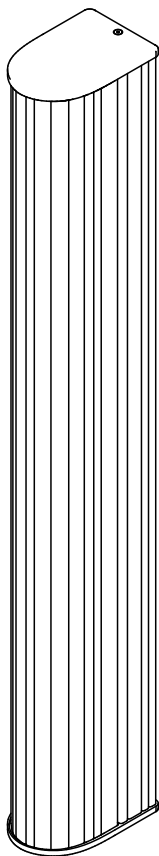


# Queue Sconce

13095 rA

AC Input



## CAUTION:

Before starting, turn off power at main circuit panel.

## ADVERTENCIA:

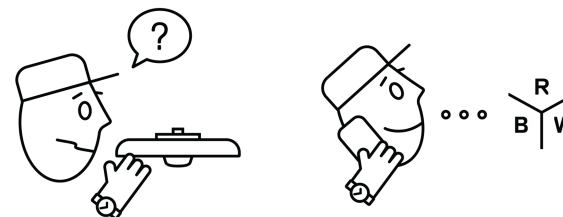
Antes de comenzar la instalación, apague la corriente en el tablero principal.

## ATTENTION:

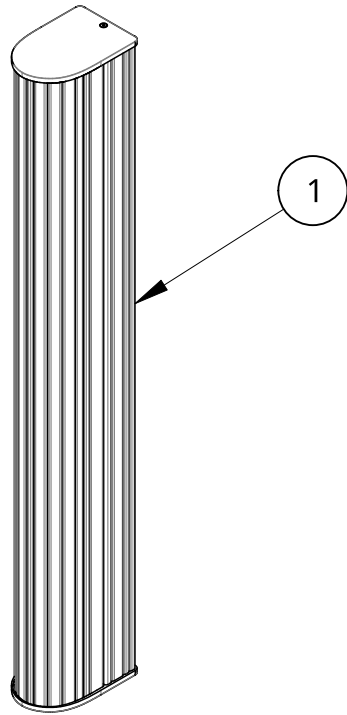
Coupez l'alimentation avant de proceder à l'installation.



Calling for backup? Scan above to contact our team.

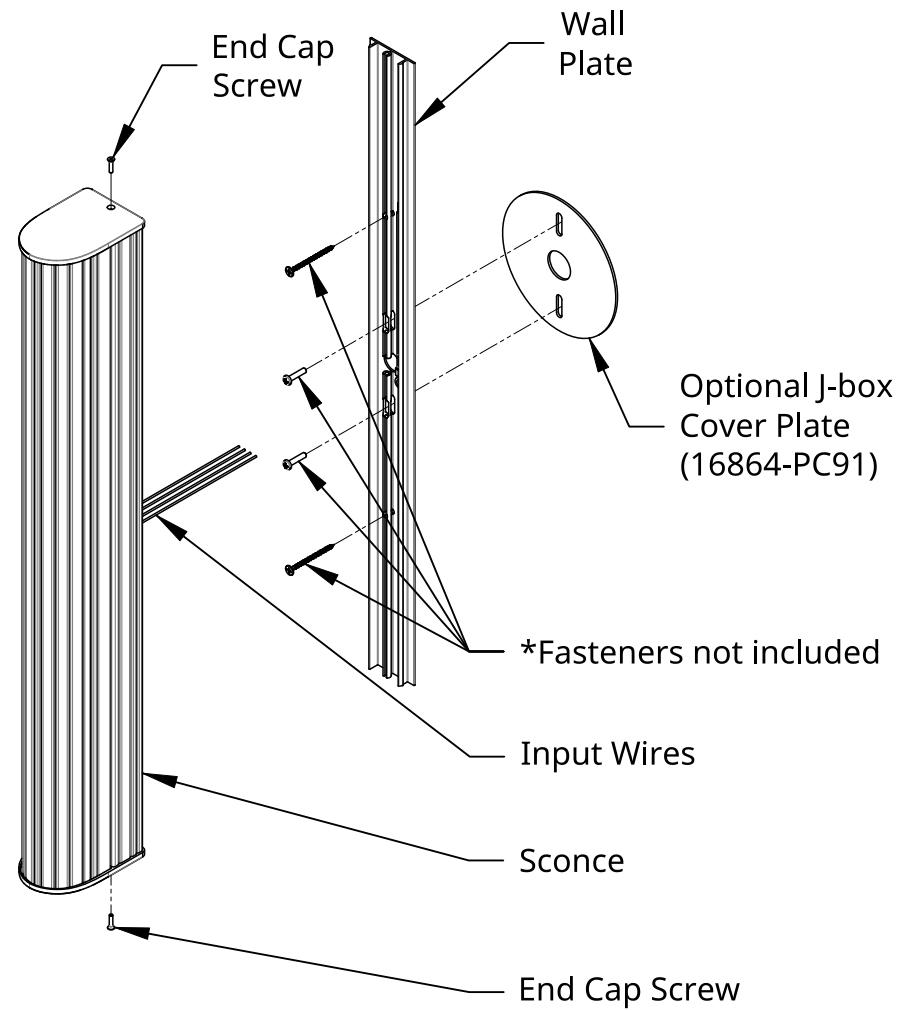


[www.RBW.com](http://www.RBW.com)  
+1 212 388 0399  
[support@RBW.com](mailto:support@RBW.com)  
© 2023, RBW Studio LLC



NOTE: Length, CCT, and Finish may vary

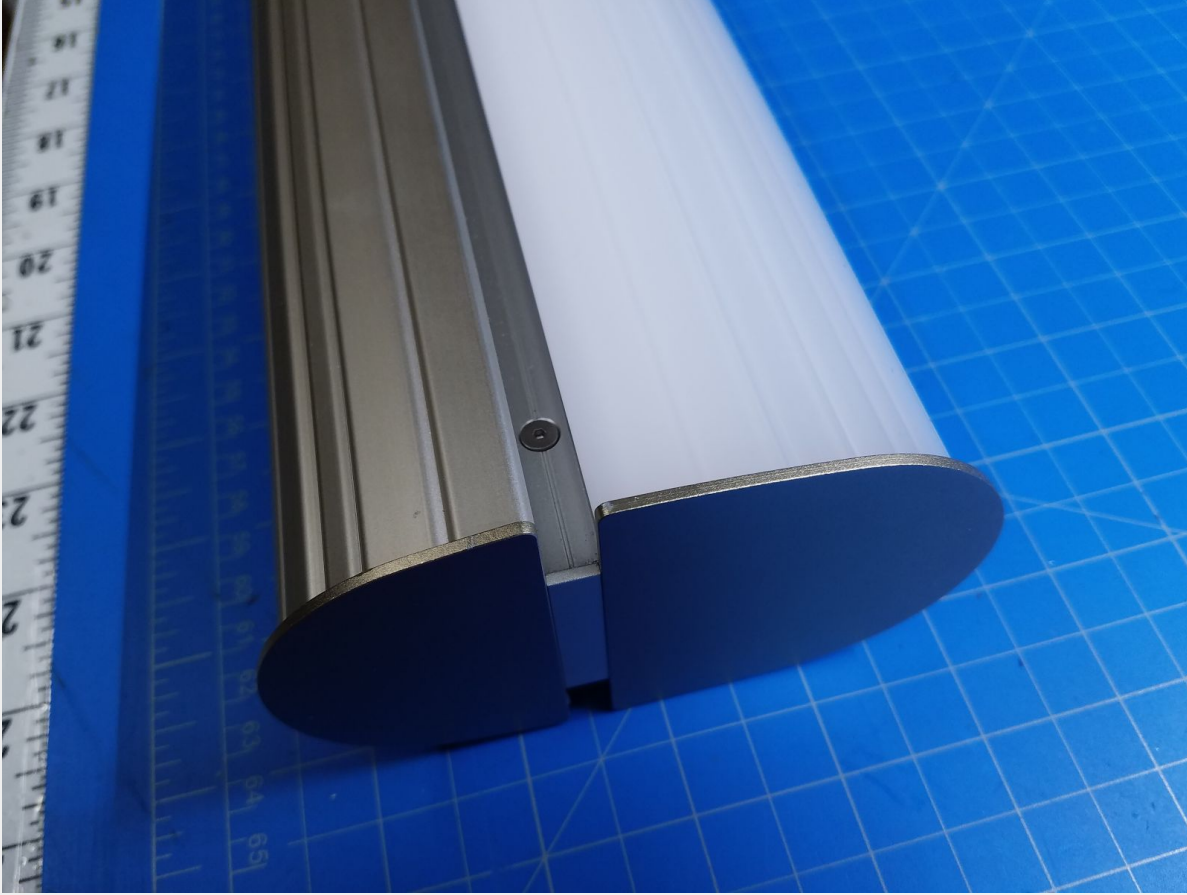
Item	Qty	Description
1	1	Assembly: Queue Sconce. 24in.



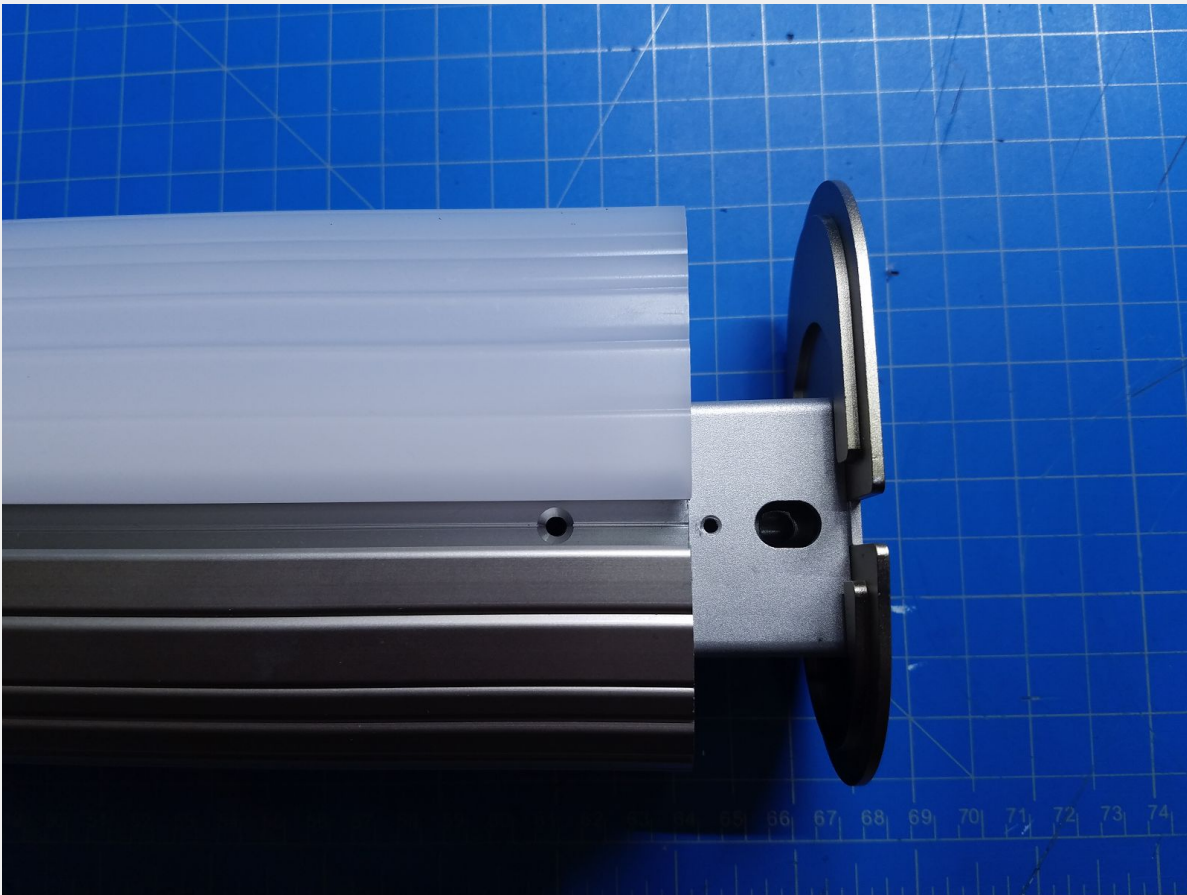
### Installation - Sconce

1. Remove Wall Plate from Sconce by removing End Cap Screws.
2. Feed leads from J-box thru the center hold of the Wall Plate, connecting respective leads to Sconce Input Wires.
3. Mount Wall Plate to J-box, securing to wall with additional fasteners (fasteners not included).
4. Snap Sconce onto Wall Plate.
5. Secure Sconce to Wall Plate by re-tightening End Cap Screws.
6. Congratulations! End of guide.

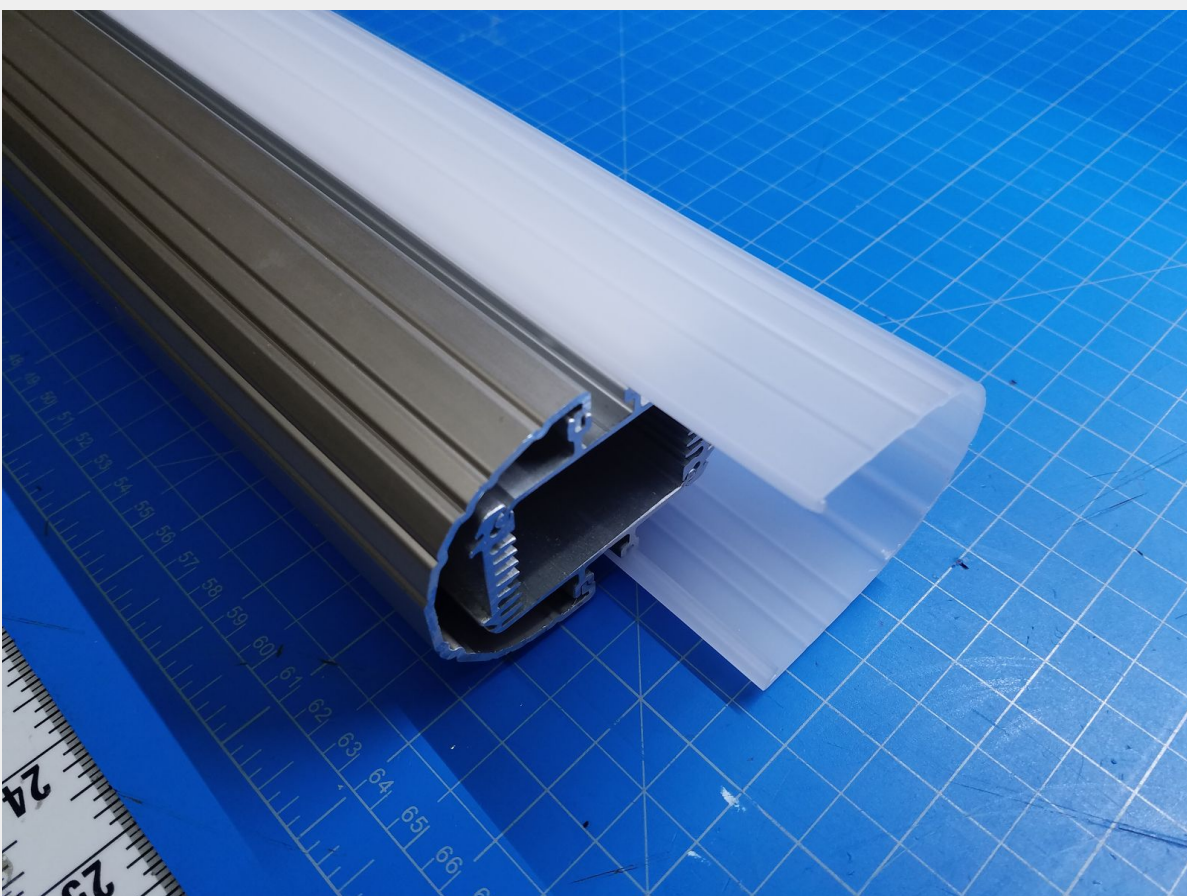
## Queue Pendant Diffuser Replacement



Place the Queue section on a clean, soft surface to prevent scratching or scuffing.



Remove the two flat head 1.5mm hex screws to allow removal of the End Cap. There is one screw on each side.



Slide the Diffuser off of the Housing along its track.