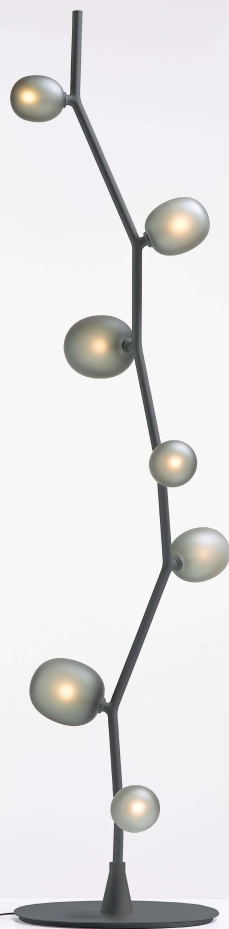


BROKIS®



CM12131

IVY FLOOR

PC1132



COMPONENTS INCLUDED WITH UNIT:

- 1× IVY light
- 1× IVY base
- 1× power cable
- 7× LED light sources
- 7× glass shades
- 1× hex key size 2
- 1× pair cotton gloves
- 1× installation manual

WARNING:

The manufacturer assumes no liability for damage resulting from incorrect assembly.

When unpacking the light, do so with regard for its material composition – the main components are made of glass.

Wear the cotton gloves included with the light when unpacking and assembling it.

Installation time: 20 minutes / 1 person



BROKIS®

BROKIS S.R.O.
ŠPANIĚLOVA 1315/25
163 00 PRAHA 6 - ŘEPY
CZECH REPUBLIC

ORG. ID 64940799
VAT ID CZ64940799
C 42174 MĚSTSKÝ SOUD
V PRAZE

TEL +420 567 211 517
TECHNICAL@BROKIS.CZ
INFO@BROKIS.CZ
WWW.BROKIS.CZ



CLEANING THE GLASS

BROKIS upholds only the highest possible quality standards. Prior to shipping, the light undergoes several quality controls and stages of cleaning. Because transportation, storage, and the amount of time that passes between packing at our plant and subsequent unpacking by the client can affect the light in different ways, we strongly recommend cleaning it prior to assembly.

The glass must first be rinsed in warm water, and a dish detergent may be used to remove all foreign particles, dust, and grease. Repeat the process if necessary and then dry the glass thoroughly with a paper towel.

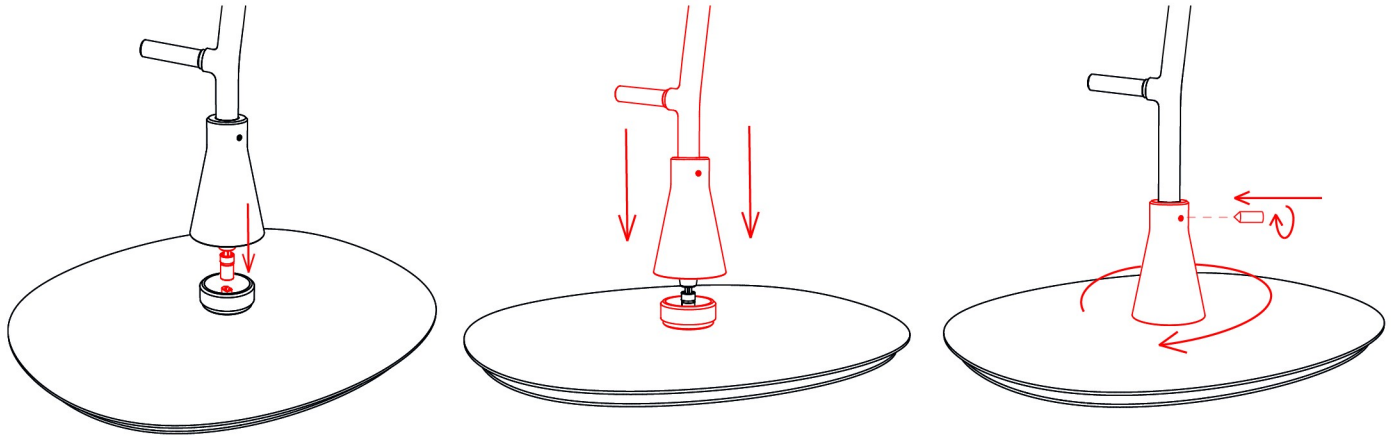
Recommendation: Do not use mineral spirits, highly concentrated thinners, or other substances not intended for use on glass surfaces. Do not use any cleaning agents containing silicone, as they may leave a film and attract dust and smudges.

PRIOR TO SHIPPING, THE FUNCTIONALITY OF EACH LIGHT AND ITS COMPONENTS IS THOROUGHLY TESTED. THE MANUFACTURER ASSUMES NO LIABILITY FOR THE MISHANDLING OF PRODUCTS.



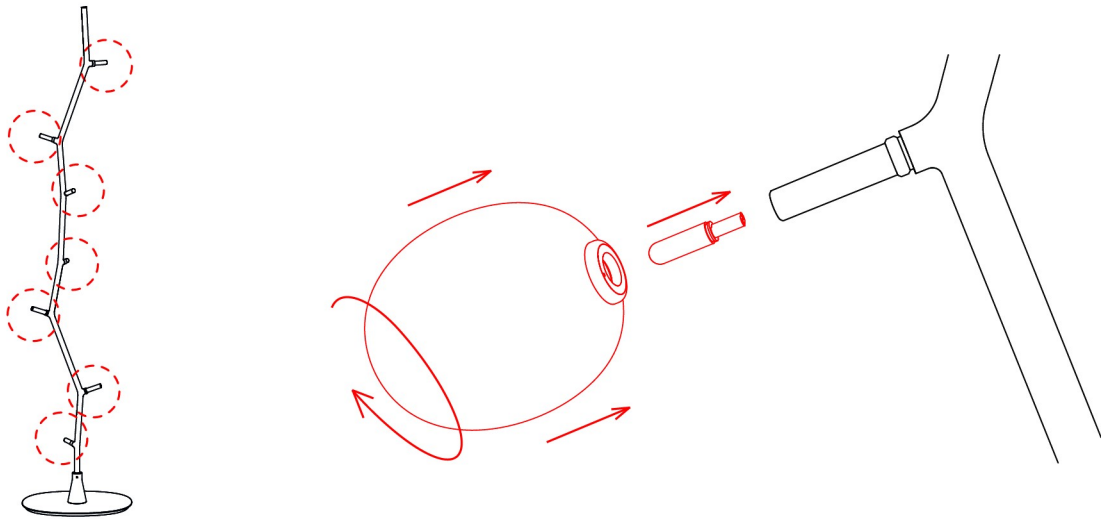
1. ASSEMBLING THE LIGHT

Insert the light branch into the connector in the base. Once the connection has been made, secure the branch to the base by turning the cap to tighten it. Lock in place with the set screw and the size 2 hex key.



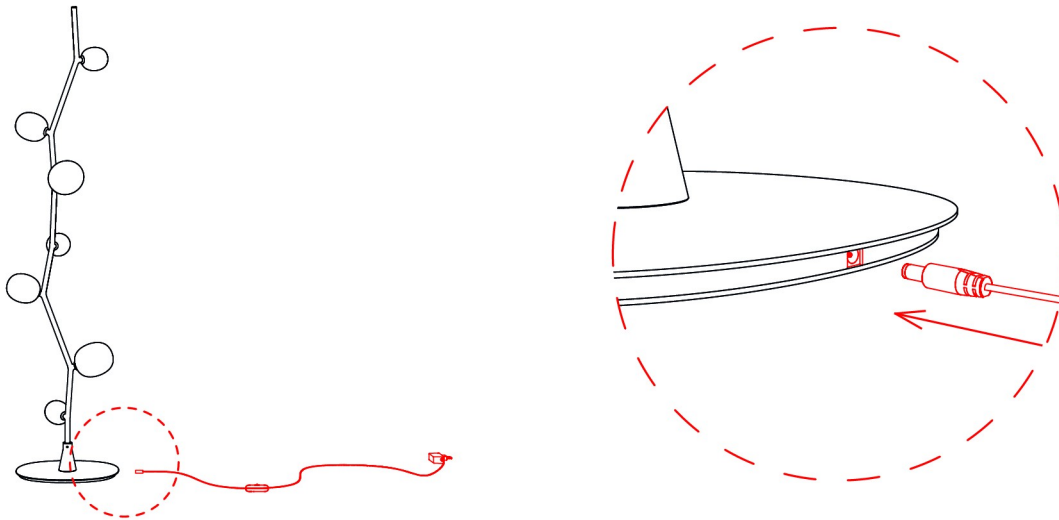
2. INSTALLING THE LED LIGHT SOURCES AND GLASS SHADES

Install the LED light sources in the fixtures. Next, screw the glass shades in place.



3. CONNECTING THE POWER CABLE

Insert the power cable into the connector in the base of the light.



4. SWITCHING ON THE LIGHT

Plug the light into an electrical outlet and switch it on. Verify that it works properly. Brightness can be adjusted by touching the upper part of the light.

