

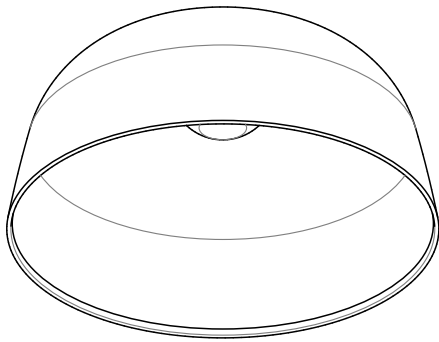


# Dram Pendant

22394 rA

Low Voltage Input

Note: External power supply may be required



## CAUTION:

Before starting, turn off power  
at main circuit panel.

## ADVERTENCIA:

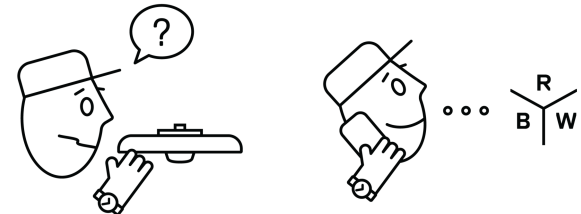
Antes de comenzar la instalación,  
apague la corriente en el tablero  
principal.

## ATTENTION:

Coupez l'alimentation avant de  
procéder à l'installation.

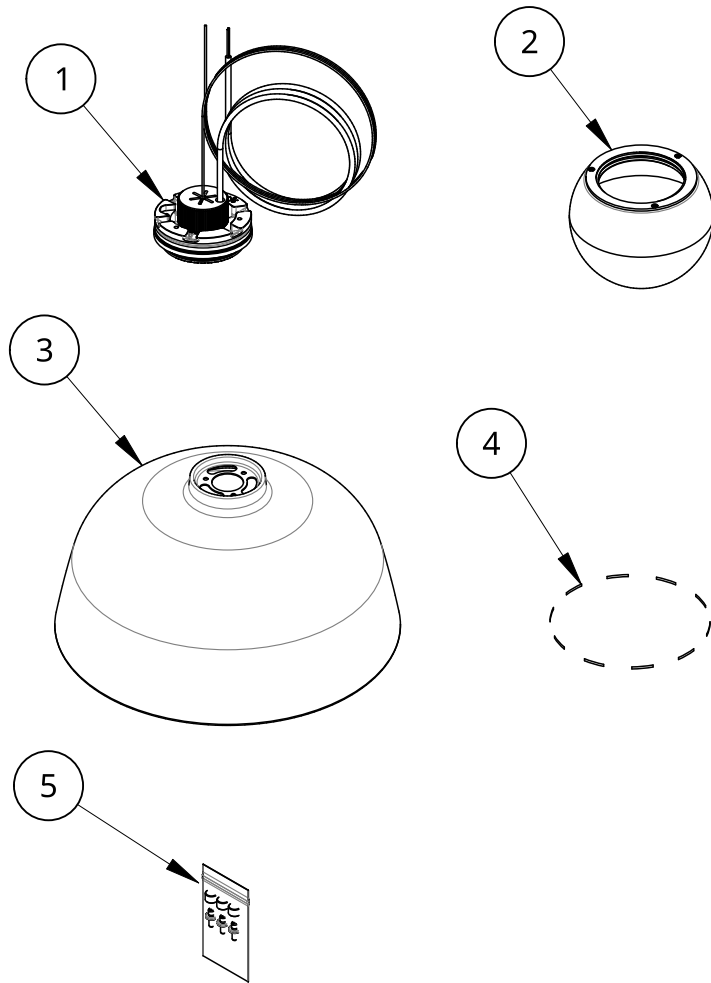


Calling for backup? Scan above  
to contact our team.

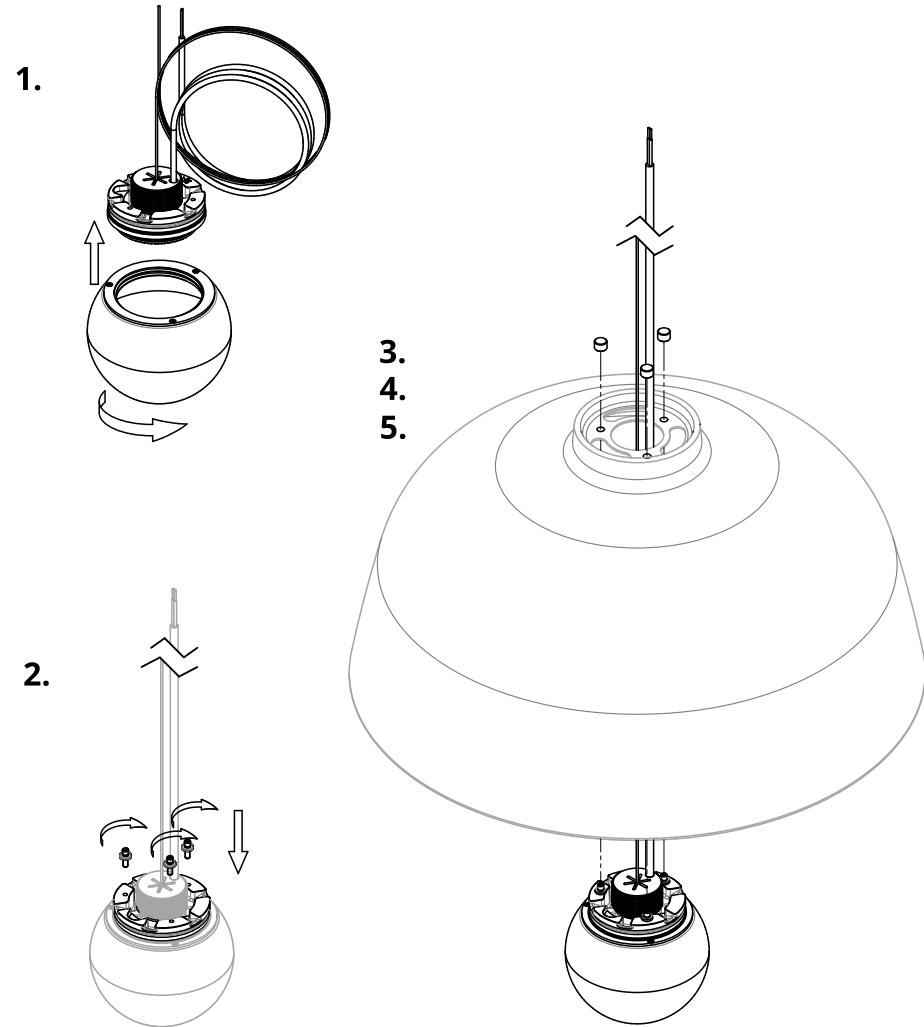


www.RBW.com  
+1 212 388 0399  
support@RBW.com  
© 2025, RBW Studio LLC

## What's Included: Part Configurations May Vary

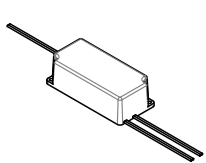


Item	QTY	Description
1	1	Assembly: Dram Pendant LED Module
2	1	Dram Globe
3	1	Dram Shade
4	1	Canopy Kit
5	1	Dram Pendant Hardware

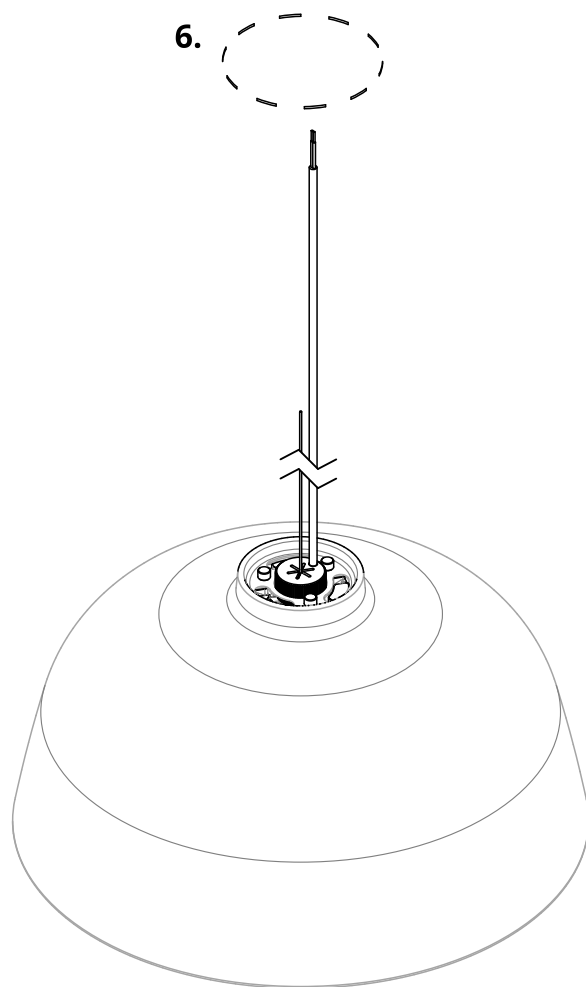


### Installation - Globe

1. Thread Globe onto LED module
2. Thread (3) Leveling Screws into LED module until bottomed out
3. Feed Power Cord, Aircraft Cable through center of Dram Shade
4. Locate leveling screws into 3 holes in shade
5. Thread on the 3 thumb nuts (caps) and tighten them down by hand



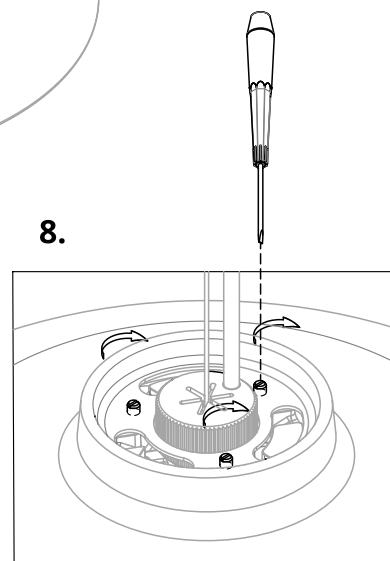
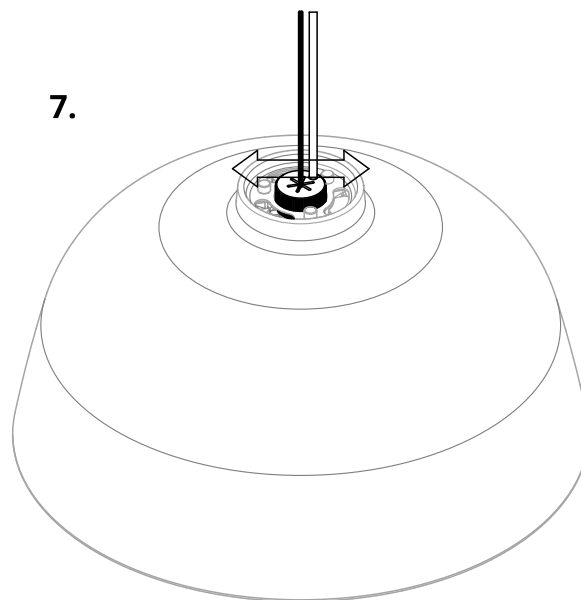
Driver dimensions and location may vary, consult your order confirmation for details.



### Installation - Canopy

6. Refer to the following supplementary instructions for Canopy installation details:

Canopy Type	Instructions Part Number
Flat Canopy	14273
Deep Canopy	13163
Mud-in Canopy	21796



### Installation - Leveling

7. Once the luminaire is suspended from the canopy, leveling can be performed by sliding the aircraft cable in the slots on top of the LED module.
8. Additional leveling can be performed by turning the leveling screws with a flathead screwdriver. These screws are located under the caps.
9. Congratulations! End of guide.